



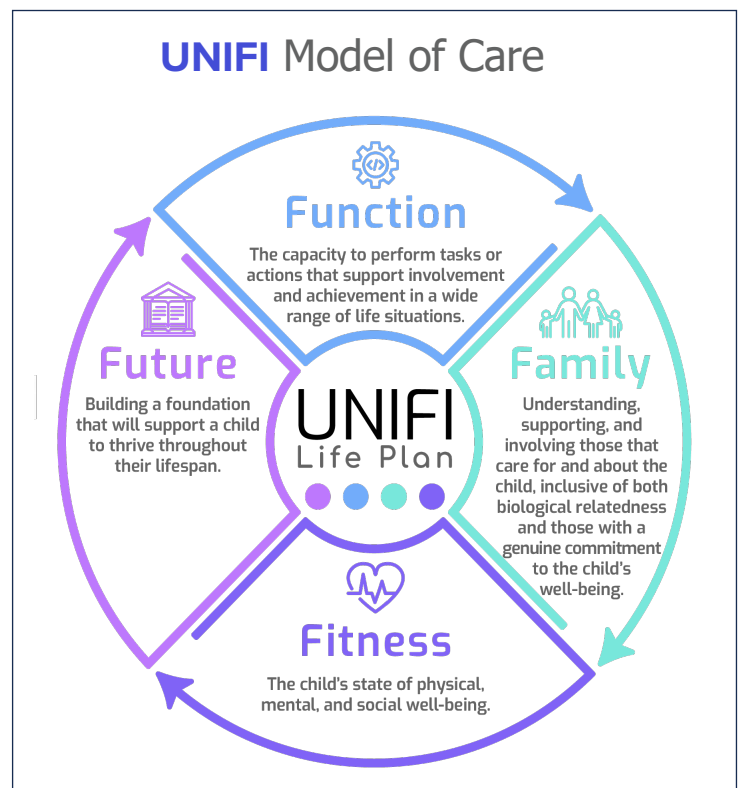
**Connecting Care,
Advancing Lives.**

AT UNIFI AUTISM CARE...WE ASPIRE FOR A CHILD'S FUTURE.

We look beyond today's therapy session and seek to prepare children for their tomorrows. Our focus is on what their life could be and what they can become.

WE UNDERSTAND that autism is a whole-child condition that can result in challenges to a child's behavior, health, & development, with a substantial impact on family and caregivers, and often involving multiple services providers.

UNIFI respects your child's individuality while building strengths, promoting resilience, and developing functional skills that enable them to flourish on their own terms throughout their life.



FIVE WAYS TO GET AUTISM CARE IN BROAD RIPPLE/INDIANAPOLIS:

1. Use the QR Code to the right to access our intake form
2. Go to <https://unifiautismcare.com/locations/broad-ripple/>
3. Call **888-717-5835** and speak to a Care Navigator
4. Send an email with your contact info to info@unifi.care
5. Have your child's provider fax us a referral to **317-708-4301**

